



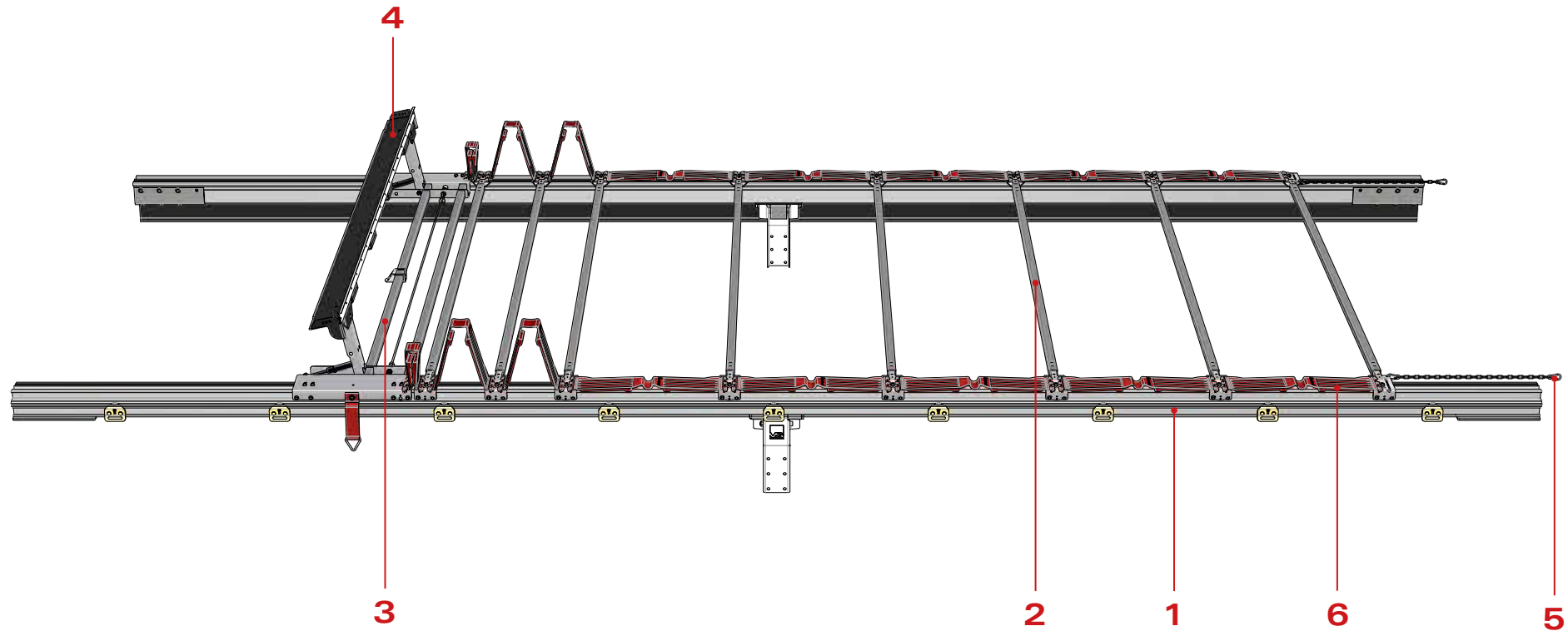
Revision: 01-10-19

Versus-omega preserves the right to alter parts and drawings at all times. Check online for the most recent updated versions.



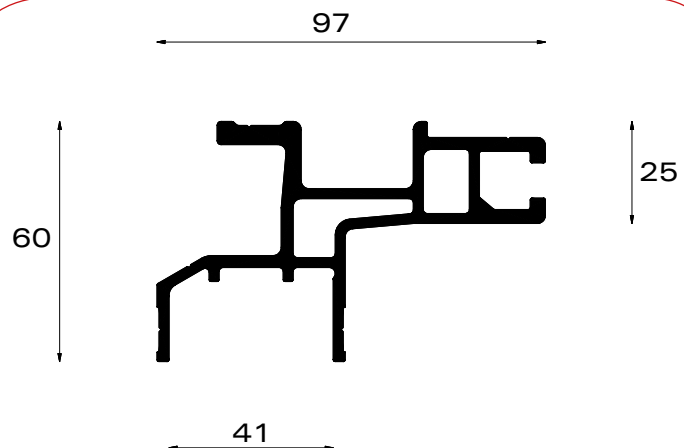
Ω: PICO

Versus



<b>1</b>	Pico rail	<b>5</b>	Set accessories
<b>2</b>	Roof stick	<b>6</b>	Folding plate
<b>3</b>	Collapsible backside	<b>7</b>	Mounting set roof stick fix
<b>4</b>	Back beam	<b>8</b>	Pull bar

### 1 Pico rail

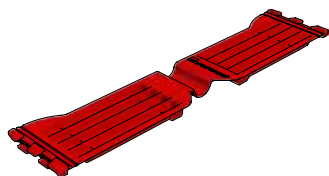


#### PART NR.

L = 7m 162-08700

$I_x : 21\text{cm}^4$   
 $I_y : 67\text{cm}^4$   
 $\pm 2,5 \text{ kg/m}$

### 6 Folding plate



#### PART NR.

Type 400	242-01004
Type 500	242-01005
Type 600	242-01006
Type 700	242-01007
Type 570	242-01057
Type 650	242-01065

### 2a Roof stick for sliding roof



#### PART NR.

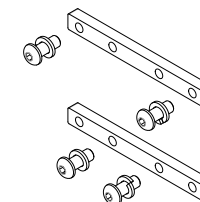
SB=2550 - Type SP	224-01001
SB=2550 - Type AS (Al)	224-03001

### 2b Roof stick for fixed roof with polyester cover



#### PART NR.

SB=2550 - Type SP	224-01101
SB=2550 - Type AS (Al)	224-03101
Mounting set roof stick fix	144-10048



\* Roof stick screwed to rail with bolts

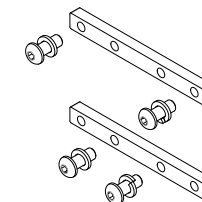
\* 1 set/roof stick

### 2c Roof stick for fixed roof with tarpaulin cover



#### PART NR.

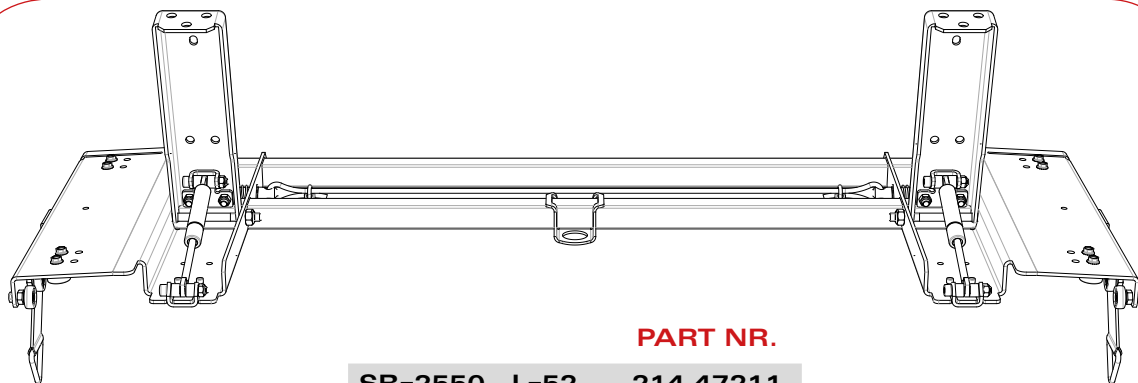
SB=2550 - Type SP	224-01211
SB=2550 - Type AS (Al)	224-03211
Mounting set roof stick fix	144-10048



\* Roof stick screwed to rail with bolts

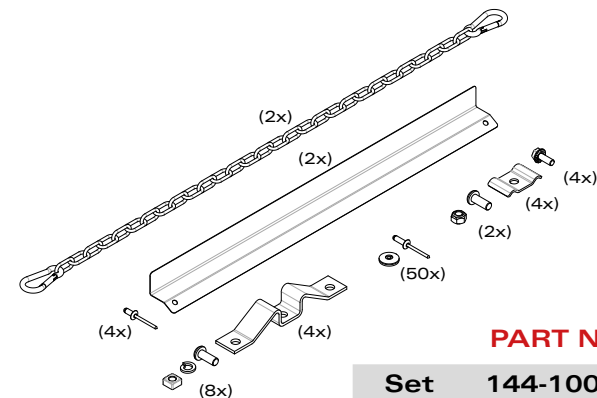
\* 1 set/roof stick

### 3 Collapsible backside



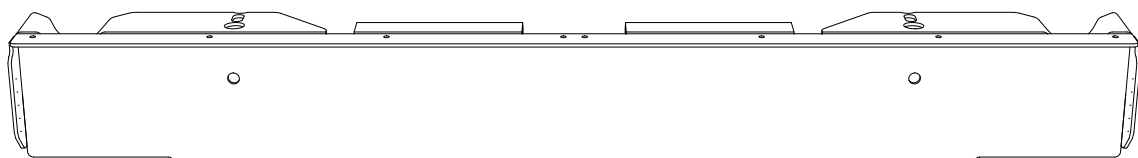
**PART NR.**  
SB=2550 - L=52    214-47211

### 5a Set accessories

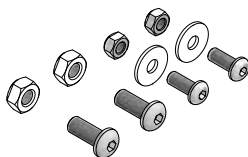


**PART NR.**  
Set    144-10001

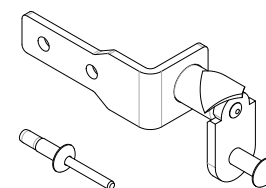
### 4a Back beam



**PART NR.**  
SB=2550 - 125Z    193-11001  
Mounting set    144-10022



### 5b Set lock collapsible backside



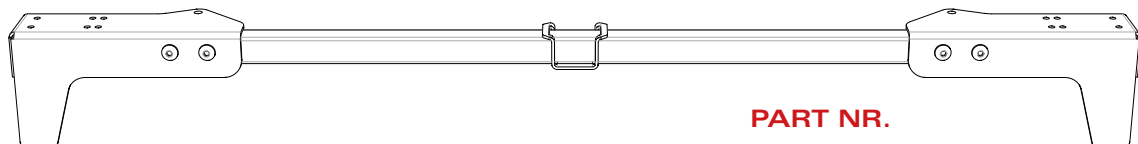
**PART NR.**  
Set    144-10086

### 5c Set accessories external unlocking



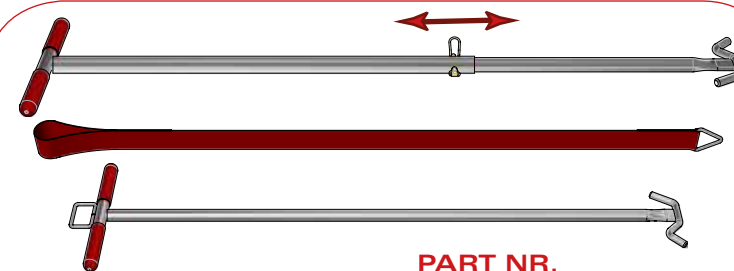
**PART NR.**  
Set    144-10174

### 4b Back beam



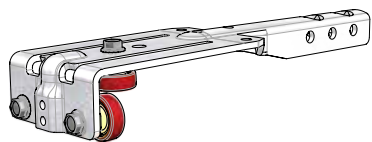
**PART NR.**  
Set back beam tube 30x30mm    144-10037  
Tube 30x30x2mm    112-07001

### 8 Pull bars & webbing



**PART NR.**  
Telescopic    144-01006  
Webbing    144-01500  
Standard    144-01003

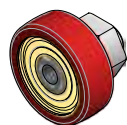
## For roof sticks



**Assembled bracket**

**PART NR.**

**174-02001**



**Roller bearing plastic**

**PART NR.**

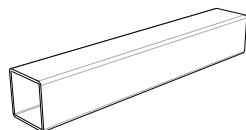
**132-01001**



**Bolt tensilock M6x16mm**

**PART NR.**

**091-23001**

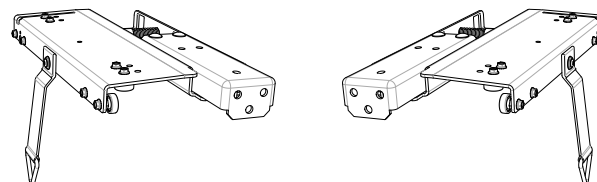


**Tube 30x30x1,5mm**

**PART NR.**

**L = 2185mm 112-01003**

## For collapsible backside

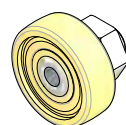


**Assembled carrier**

**PART NR.**

**Left 204-47211**

**Right 204-47212**



**Roller bearing steel**

**PART NR.**

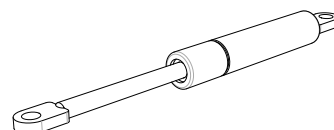
**132-03001**



**Bolt tensilock M6x16mm**

**PART NR.**

**091-23001**

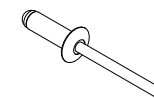


**Gas spring 700N**

**PART NR.**

**302-01001**

## For accessories set



**Rivet & washer**

**PART NR.**

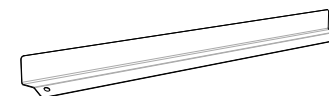
**50 pieces 144-10003**



**Rope clamp**

**PART NR.**

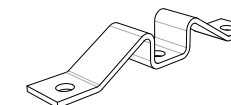
**292-01001**



**Protection plate**

**PART NR.**

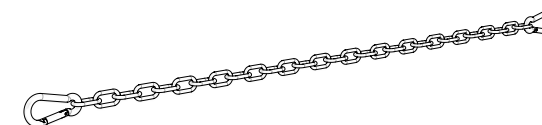
**142-06006**



**Locking nose**

**PART NR.**

**142-05002**



**Chain with 2 hooks**

**PART NR.**

**142-07001**



**Versus-Omega**

Nijverheidslaan 1527a  
B-3660 Oudsbergen  
Belgium

t. +32 89 320 190  
f. +32 89 320 199  
e. [info@versus-omega.com](mailto:info@versus-omega.com)  
w. [www.versus-omega.com](http://www.versus-omega.com)

